

# GE CAPITAL IT CENTER OF EXCELLENCE PLACE ST. CHARLES | NEW ORLEANS, LA

INTERIOR BUILD-OUT, FURNITURE, FIXTURES AND FINISHES



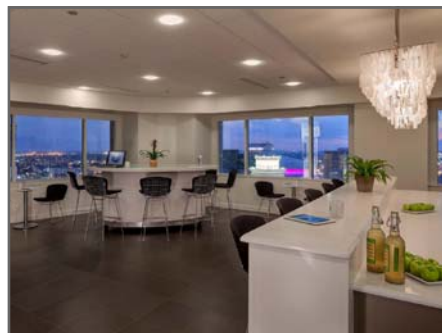
**COMPLETED:** PHASE I - 2012

**PROGRAM:** 24,633 SF

**BUDGET:** \$1.8 MILLION

**CLIENT:** GE CAPITAL

■ General Electric recently opened the first phase of its corporate offices in downtown New Orleans at Place St. Charles. The center provides software development and information technology and is expected to grow to roughly 300 information technology professionals. The majority of the office has views of the exterior and the conference rooms that are located along the perimeter have full height glass walls and doors allowing natural lighting to reach the interior spaces. One of GE's main goals was to promote collaboration; full height back-painted writeable glass panels are located in conference rooms as well as throughout the office spaces adjacent to each group of workstations, telephone rooms and the Coffee Point/Break Room. The Break Room/Coffee Point area is located on a perimeter corner, allowing open views of the city. The light maple wall panels and glass found throughout the space emphasize the simple clean lines that are appropriate to this center.



# GE CAPITAL IT CENTER OF EXCELLENCE PLACE ST. CHARLES | NEW ORLEANS, LA

INTERIOR BUILD-OUT, FURNITURE, FIXTURES AND FINISHES

(continued)



Coffee Point / Break Room



Exterior View



Walkstations